

**VILLAGE OF ELLSWORTH  
PARKS, RECREATION, DEVELOPMENT COMMITTEE**

January 26, 5:00pm  
130 N. Chestnut St. Lower-Level Boardroom (East Rear Entrance)

Join Zoom Meeting

<https://us06web.zoom.us/j/87131943945?pwd=8llmUIC7MrtiN4xIY0srfXEqlbboFc.1>

Meeting ID: 871 3194 3945

Passcode: 640073

**AMENDED AGENDA:**

1. Call to order
2. Discuss/Possible Action on Bonnie Langer Park amenities donation from Ann Huppert
3. Discuss/Possible Action on the East End Park Master Plan
4. Adjournment

Jarod Traynor, Chairperson

Please note that members of the Village Board may be in attendance at the meeting for information only, no official action of the Village Board will occur at the Meeting.

Posted at the Village Hall, Village Website and Library

Emailed to P.C. Journal (Information Only)

# VILLAGE OF ELLSWORTH

---

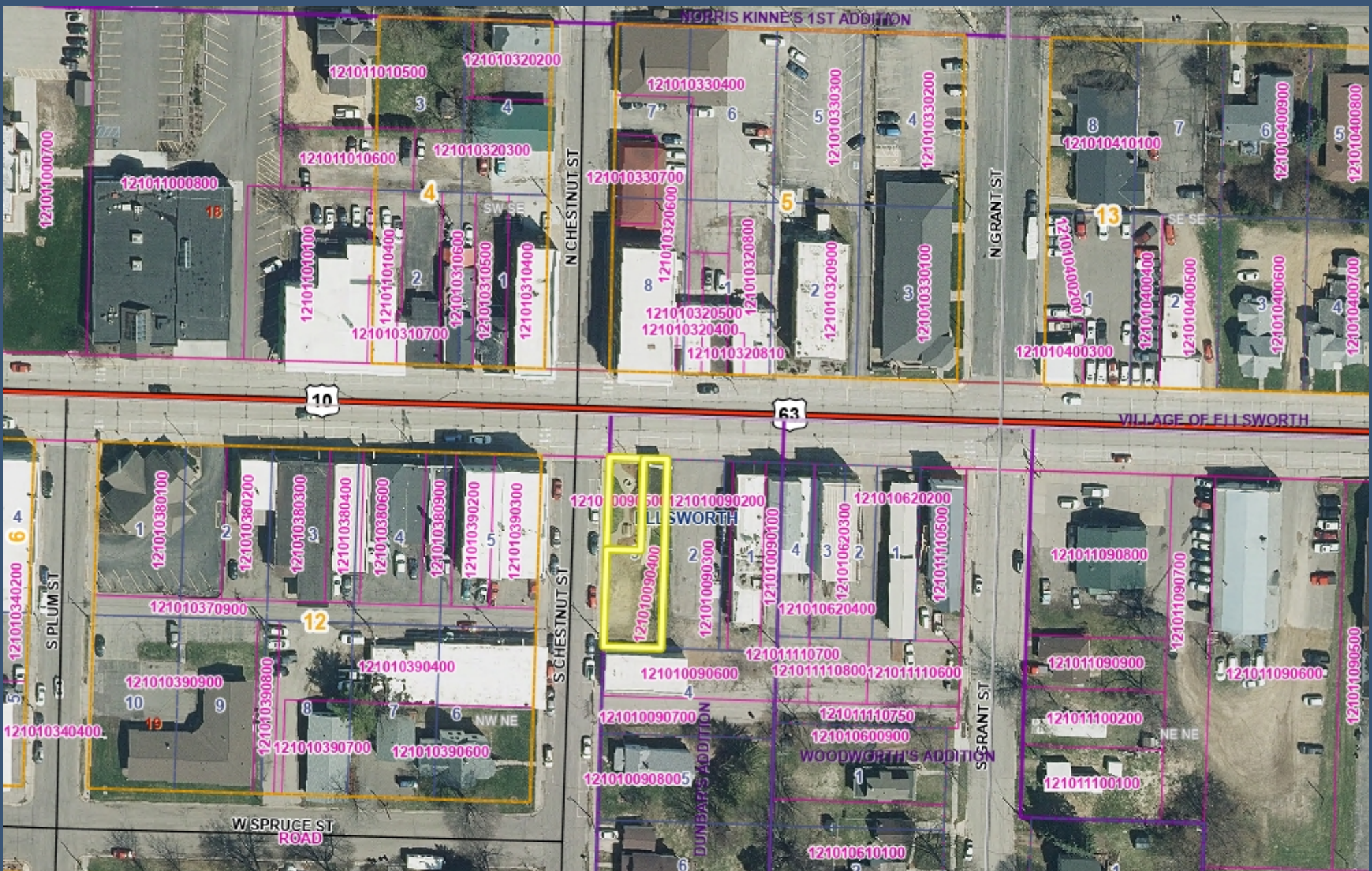
130 N CHESTNUT STREET, ELLSWORTH, WI 54011 | PHONE 715-273-4742 | FAX 715-273-6460

## **Parks, Recreation, Development Committee, January 26, 2026**

### **Agenda #2 – Discuss/Possible Action on Bonnie Langer Park amenities donation from Ann Huppert**

Ann Huppert is leasing the property at 335 W. Main St to operate an ice cream shop. This property neighbors Bonnie Langer Park to the east and south. Due to her businesses proximity to the park and the likelihood of her patrons using the park, she would like to donate benches. The benches would be available for public use regardless of if they are customers of the ice cream shop.

Photos of the benches will be provided at the meeting.



# Bonnie Langer Park/Huppert

Village of Ellsworth  
Pierce County, Wisconsin

Infinite GIS



### Bonnie Langer Memorial Park

Located at 339 W. Main St, the corner of Main St and Chestnut St, this 0.042-acre park provides green space and picnic table in the business district.



Park Name: Bonnie Langer Memorial Park

Type: Community Park

339 W. Main St - Ellsworth, WI 54011

### Site Analysis Summary

Existing Facilities:	
<ul style="list-style-type: none"> <li>Picnic Table</li> </ul>	<ul style="list-style-type: none"> <li>Water Feature</li> </ul>
Programs, Events & Revenue Generators:	
<ul style="list-style-type: none"> <li>Family Picnics</li> </ul>	

### Maintenance Program Details / Notes

Maintenance Program:	
<ul style="list-style-type: none"> <li>Regular Maintenance of Grounds and Equipment</li> </ul>	

### Improvement Options

Improvements Suggested:	
<ul style="list-style-type: none"> <li>Add shade feature</li> <li>More seating options</li> </ul>	<ul style="list-style-type: none"> <li>Improve water feature</li> </ul>

### Goals and Objectives

#### Goal 1: Continue to maintain the Village’s outdoor park and recreation facilities

- **Maintain and improve the accessibility** of the Village’s existing outdoor recreation facilities.
- **Strive for new and existing facilities to meet the needs of all citizens**, including children, teenagers, the elderly, and individuals with mobility challenges.
- **Provide year-round outdoor recreation**, improved facilities, and additional outdoor opportunities.
- **Monitor the general overall condition** of the Village’s outdoor recreation amenities annually and establish an outdoor recreation Improvements Program.

#### Goal 2: Protect and enhance the unique natural resources within the Village

- **Maintain an awareness** of the vulnerability of the Village’s valuable natural resources.
- **Provide facilities that enable recreational users the opportunity to enjoy the Village’s natural resources** without causing any adverse impacts on these resources.

#### Goal 3: Use the Village’s resources efficiently and enhance funding opportunities for park and recreational needs of the Village

- **Evaluate recreation facility usage.**
- **Explore opportunities for both new park and recreational facilities, equipment and the expansion of existing parks.**
- **Monitor state and federal grant programs** for future park development. Apply for funds if appropriate.

#### Goal 4: Provide and improve public access to outdoor recreation land and water

- **Gather input regarding the Village’s outdoor recreation facilities.** These entities could include WDNR, clubs, the school district, and others.

#### Goal 5: Promote recreation to improve public health and wellness

- **Improve the coordination and cooperation** of the Village and other public or private entities in developing and using all current and future outdoor recreation areas.

#### Goal 6: Upgrade and Diversify Recreation Facilities

- **Renovate our playgrounds** with inclusive and innovative equipment, aiming to serve a broader demographic, including children with different abilities.
- **Establish dedicated pickleball courts** by converting suitable spaces, accommodating the sport's growing popularity.

- **Explore the use of existing facilities or the development of new structures to serve as Storm shelters** for the community. As new facilities are built, we should consider design with the structural integrity to provide shelter from tornadoes or severe weather conditions for both our citizens and visitors.
- **Explore opportunities for new flat green space** to enable more youth activities.

### **Goal 7: Work with our Partners to Create Versatile Community Spaces and Events**

- **Work with area companies, clubs, associations, organizations, coaches, leaders, all the volunteers, and other government entities to maintain and grow** recreational opportunities and special events in Ellsworth.
- **Initiate a collaborative project** for a multipurpose indoor space by partnering with local schools or businesses, providing a venue for sports, meetings, and cultural events.
- **Seek partnerships and community support for a regular entertainment series or concert series** in a park. This series could eventually lead to a permanent venue like a stage or bandshell.
- **Design and install a water feature/splash pad** in a community park that can be used by our citizens and visitors.

### **Goal 8: Enhance Awareness and Utilization of Recreation Resources**

- **Update the Village's website to include all existing facilities** to better inform the community of the Village's recreation facilities.
- **Implement a comprehensive digital marketing strategy** to promote recreation facilities on Google Maps and in social media.
- **Launch a "Recreation Spotlight" in our quarterly newsletter** featuring different parks, facilities, and upcoming events, encouraging community participation and feedback.

### **Goal 9: The community will seek to enhance a expand our network of Trails, Sidewalks, Walking Paths and Safe Routes to Schools and other Public Facilities**

- **Working with our developers, schools, businesses, County, and State Government** we will look for opportunities to enhance and develop bike and pedestrian facilities for safe transit and exercise in the community.
- **The Village will seek to connect existing systems** when appropriate to develop a more user-friendly environment.

# VILLAGE OF ELLSWORTH

---

130 N CHESTNUT STREET, ELLSWORTH, WI 54011 | PHONE 715-273-4742 | FAX 715-273-6460

## **Parks, Recreation, Development Committee, January 26, 2026**

### **Agenda #3 – Discuss/Possible Action on the East End Park Master Plan**

At the November 2025 meeting, the Committee discussed goals and priorities for East End Park. A shared goal was for the park to function as a destination park, given its proximity to the East End commercial area and its high visibility along Main Street.

MSA will attend the meeting to present three concept plans for East End Park. Each concept includes a natural playground area, amphitheater, seating areas, walking paths, open-air shelters, and open lawn space. All concepts incorporate portions of the existing site features, including select buildings and mature trees.

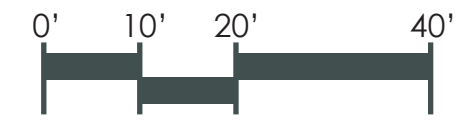
Concepts 1 and 2 retain the existing log cabin. Concept 3 retains the existing restroom building and basketball court. Concepts 2 and 3 also include a water feature created by opening the existing stormwater drainage area.

Each concept is provided for review alongside the project Goals and Objectives, as well as the park inventory and future options outlined in the Comprehensive Outdoor Recreation Plan.

**MSA**  
**East End Park**  
**Master Plan**

CONCEPT 1

Ellsworth, WI  
 November 2025



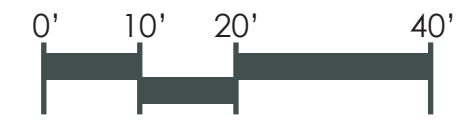
- Legend**
- 1 Parking
  - 2 Walking Paths
  - 3 Ex Building
  - 4 Seating Area
  - 5 Naturalized Flood Prevention Area
  - 6 Open Lawn
  - 7 Open Air Shelter
  - 8 Bathroom Building
  - 9 Natural Playground
  - 10 Open Lawn Amphitheater
  - 11 Gazebo
  - 12 Parallel Parking
  - Ex Trees



**MSA**  
**East End Park**  
**Master Plan**

CONCEPT 2

Ellsworth, WI  
 November 2025



Legend

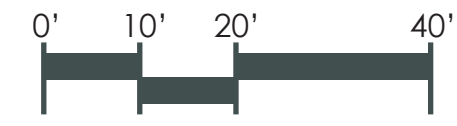
- |                                     |                           |
|-------------------------------------|---------------------------|
| 1 Parking                           | 7 Open Air Shelter        |
| 2 Walking Paths                     | 8 Bathroom Building       |
| 3 Ex Building                       | 9 Natural Playground      |
| 4 Seating Area                      | 10 Open Lawn Amphitheater |
| 5 Naturalized Flood Prevention Area | Prop Trees                |
| 6 Open Lawn                         | Ex Trees                  |



**MSA**  
**East End Park**  
**Master Plan**

**CONCEPT 3**

Ellsworth, WI  
 November 2025



Legend

- |                                   |                                  |
|-----------------------------------|----------------------------------|
| <b>1</b> Parking                  | <b>7</b> Open Air Shelter        |
| <b>2</b> Walking Paths            | <b>8</b> Ex Basketball Court     |
| <b>3</b> Ex Restrooms             | <b>9</b> Natural Playground      |
| <b>4</b> Seating Area             | <b>10</b> Open Lawn Amphitheater |
| <b>5</b> Farmers Market Pavillion | Ex Trees                         |
| <b>6</b> Open Lawn                |                                  |



### East End Park

In the early 1900s, a group of business professionals from East Ellsworth joined forces to construct the Park Pavilion. Now gone a pillar from the original pavilion remains standing in East End Park today.

East End Park can be found near the East Ellsworth business district, on Hwy 10 and E. Wall St., with off- street parking available off N. Crosscut Street. Event participants, locals and tourists passing through Ellsworth often frequent the park, which is well-regarded by the public.



Park Name: East End Park

Type: Community Park

East Main Street - Ellsworth, WI 54011

### Site Analysis Summary

Existing Facilities:	
<ul style="list-style-type: none"> <li>Picnic Pavilions</li> <li>Playground Equipment</li> <li>Grills</li> <li>Picnic Tables</li> </ul>	<ul style="list-style-type: none"> <li>Two Basketball Hoops</li> <li>Drinking Fountain</li> <li>Restroom facility</li> <li>Park benches</li> </ul>
Programs, Events	
<ul style="list-style-type: none"> <li>Summer Fun Series</li> <li>Farmers Market</li> <li>Cheese Curd Festival hosted by Chamber of Commerce</li> </ul>	<ul style="list-style-type: none"> <li>Pumpkin in the Park</li> <li>Public Library Programing</li> <li>Other seasonal events</li> </ul>

### Maintenance Program Details / Notes

Maintenance Program:	
<ul style="list-style-type: none"> <li>Regular Maintenance of Grounds and Equipment</li> </ul>	<ul style="list-style-type: none"> <li>Clean Restrooms</li> </ul>

### Improvement Options and Future Plans

Improvements Suggested:	
<ul style="list-style-type: none"> <li>Upgrade Playground (potential ADA)</li> <li>Explore and Build Pavilion / Bandshell</li> </ul>	<ul style="list-style-type: none"> <li>Storm Shelter / Restroom Facility</li> <li>Improve Facilities for Events</li> </ul>

### Goals and Objectives

#### Goal 1: Continue to maintain the Village’s outdoor park and recreation facilities

- **Maintain and improve the accessibility** of the Village’s existing outdoor recreation facilities.
- **Strive for new and existing facilities to meet the needs of all citizens**, including children, teenagers, the elderly, and individuals with mobility challenges.
- **Provide year-round outdoor recreation**, improved facilities, and additional outdoor opportunities.
- **Monitor the general overall condition** of the Village’s outdoor recreation amenities annually and establish an outdoor recreation Improvements Program.

#### Goal 2: Protect and enhance the unique natural resources within the Village

- **Maintain an awareness** of the vulnerability of the Village’s valuable natural resources.
- **Provide facilities that enable recreational users the opportunity to enjoy the Village’s natural resources** without causing any adverse impacts on these resources.

#### Goal 3: Use the Village’s resources efficiently and enhance funding opportunities for park and recreational needs of the Village

- **Evaluate recreation facility usage.**
- **Explore opportunities for both new park and recreational facilities, equipment and the expansion of existing parks.**
- **Monitor state and federal grant programs** for future park development. Apply for funds if appropriate.

#### Goal 4: Provide and improve public access to outdoor recreation land and water

- **Gather input regarding the Village’s outdoor recreation facilities.** These entities could include WDNR, clubs, the school district, and others.

#### Goal 5: Promote recreation to improve public health and wellness

- **Improve the coordination and cooperation** of the Village and other public or private entities in developing and using all current and future outdoor recreation areas.

#### Goal 6: Upgrade and Diversify Recreation Facilities

- **Renovate our playgrounds** with inclusive and innovative equipment, aiming to serve a broader demographic, including children with different abilities.
- **Establish dedicated pickleball courts** by converting suitable spaces, accommodating the sport's growing popularity.

- **Explore the use of existing facilities or the development of new structures to serve as Storm shelters** for the community. As new facilities are built, we should consider design with the structural integrity to provide shelter from tornadoes or severe weather conditions for both our citizens and visitors.
- **Explore opportunities for new flat green space** to enable more youth activities.

### **Goal 7: Work with our Partners to Create Versatile Community Spaces and Events**

- **Work with area companies, clubs, associations, organizations, coaches, leaders, all the volunteers, and other government entities to maintain and grow** recreational opportunities and special events in Ellsworth.
- **Initiate a collaborative project** for a multipurpose indoor space by partnering with local schools or businesses, providing a venue for sports, meetings, and cultural events.
- **Seek partnerships and community support for a regular entertainment series or concert series** in a park. This series could eventually lead to a permanent venue like a stage or bandshell.
- **Design and install a water feature/splash pad** in a community park that can be used by our citizens and visitors.

### **Goal 8: Enhance Awareness and Utilization of Recreation Resources**

- **Update the Village's website to include all existing facilities** to better inform the community of the Village's recreation facilities.
- **Implement a comprehensive digital marketing strategy** to promote recreation facilities on Google Maps and in social media.
- **Launch a "Recreation Spotlight" in our quarterly newsletter** featuring different parks, facilities, and upcoming events, encouraging community participation and feedback.

### **Goal 9: The community will seek to enhance a expand our network of Trails, Sidewalks, Walking Paths and Safe Routes to Schools and other Public Facilities**

- **Working with our developers, schools, businesses, County, and State Government** we will look for opportunities to enhance and develop bike and pedestrian facilities for safe transit and exercise in the community.
- **The Village will seek to connect existing systems** when appropriate to develop a more user-friendly environment.